

A-SILICONE IMPRESSION MATERIAL



A SMALL STEP FOR DENTISTS
A GREAT STEP FOR DENTISTRY

PRESIDENT
CLASSIC SINCE 1975



PRESIDENT
The Original

 **COLTENE**



A SMALL STEP FOR DENTISTS A GREAT STEP FOR DENTISTRY



THE INTRODUCTION OF PRESIDENT IN 1975 – THE FIRST A-SILICONE IN THE MARKET – IS CONSIDERED A MILESTONE IN THE DEVELOPMENT OF HIGH-PRECISION DENTAL IMPRESSION MATERIALS.

With the use of polyvinylsiloxane (PVS) elastomers for the first time PRESIDENT users reached an unprecedented dimensional stability and precision, which today still characterizes an A-Silicone. The PRESIDENT brand is still convincing as a traditional product line of COLTENE with its sovereign quality that has been continuously optimized.



TRAY MATERIALS

The classical PRESIDENT tray materials offer a **very high tear strength** and **elasticity**. Due to flawless removal impressions are precise and succeed even under most difficult conditions. PRESIDENT heavy body is **surface activated** and **thixotropic** with fast pressure build up so that the wash material is easily driven into the clinically critical areas. PRESIDENT putties mix quickly, are offered in two end hardnesses and one fast version.



heavy body



putty



putty soft



WASH MATERIALS

The classical PRESIDENT wash materials are stable but free-flowing under pressure to capture all marginal details precisely. The **surface activated, hydrophilic** properties are effected by surfactants in the material. In contact with moisture these additives move to the surface and decrease the surface tension, resulting in an **outstanding wettability**.

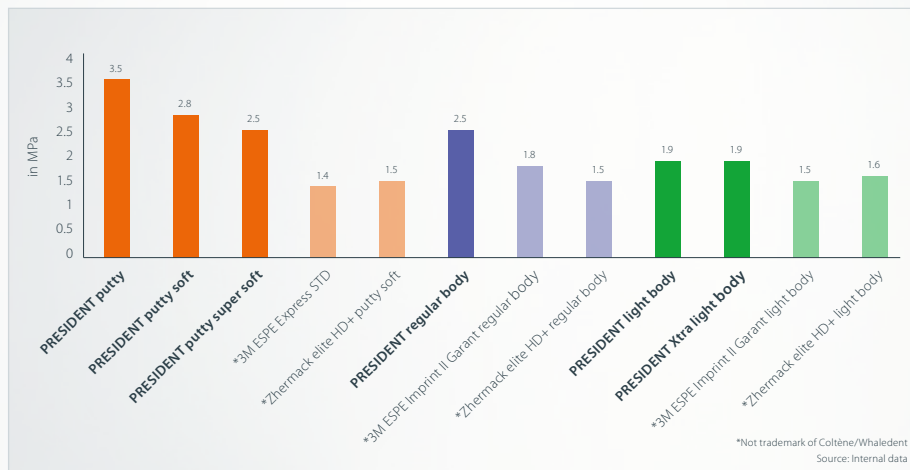


light body



regular body

The PRESIDENT portfolio shows the highest tear strength compared to competitors which results in great precision and a good dimensional stability



TEAR STRENGTH

40 YEARS OF QUALITY & LOYALTY

Since 40 years dentists trust in PRESIDENT.

The loyalty to this brand illustrates that we kept our quality promise during the time.

After 40 years our firstborn A-Silicone child has grown up.

On occasion of this event COLTENE has come up with a special present for actual and potential customers:



NEW

putty super soft



NEW

Xtra light body

ORDER INFORMATION



microSystem 25 ml

- 60019932** **PRESIDENT** The Original
Xtra light body **NEW**
 4 x 25 ml cartridge
 12 x Universal Mixing Tips
- 6002** **PRESIDENT** light body
 4 x 25 ml cartridge
 12 x Universal Mixing Tips
- 6005** **PRESIDENT** light body
 20 x 25 ml cartridge
- 6012** **PRESIDENT** regular body
 4 x 25 ml cartridge
 12 x Universal Mixing Tips
- 6015** **PRESIDENT** regular body
 20 x 25 ml cartridge

50 ml

- 60019937** **PRESIDENT** The Original
Xtra light body **NEW**
 2 x 50 ml cartridge
 12 x Universal Mixing Tips
- 4626** **PRESIDENT** light body
 2 x 50 ml cartridge
 12 x Universal Mixing Tips
- 4627** **PRESIDENT** regular body
 2 x 50 ml cartridge
 12 x Universal Mixing Tips

75 ml

- 6712** **PRESIDENT** heavy body
 2 x 75 ml cartridge
 8 x Mixing Tips Turquoise
- 6715** **PRESIDENT** heavy body
 20 x 75 ml cartridge

putty

- 4617** **PRESIDENT** putty
 2 x 300 ml
 2 x spoons
- 4843** **PRESIDENT** putty soft
 2 x 300 ml
 2 x spoons
- 4632** **PRESIDENT** fast putty soft
 2 x 300 ml
 2 x spoons
- 60019944** **PRESIDENT** The Original
putty super soft **NEW**
 2 x 300 ml
 2 x spoons

System 360

- 6100** **PRESIDENT** heavy body Starter Kit
 1 x 380 ml cartridge
 10 x Dynamic Mixing Tips
 1 x Fixation Ring
- 6105** **PRESIDENT** heavy body Refill
 2 x 380 ml cartridge

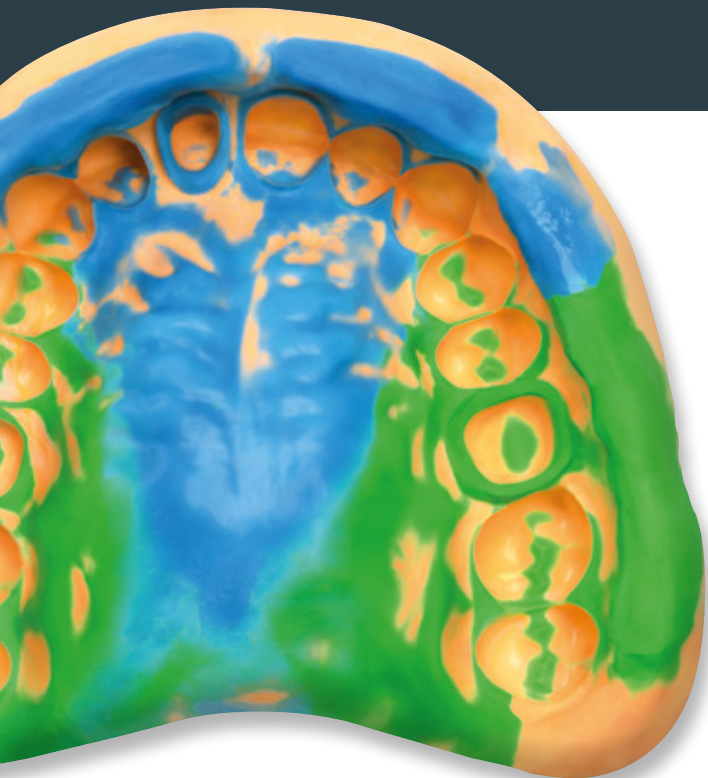
Tubes

- 4667** **PRESIDENT** light body
 1 x 53 ml Base
 1 x 53 ml Catalyst
- 4717** **PRESIDENT** regular body
 1 x 53 ml Base
 1 x 53 ml Catalyst
- 4767** **PRESIDENT** heavy body
 1 x 53 ml Base
 1 x 53 ml Catalyst



40 YEARS EXPERIENCE

40 years of PRESIDENT means 14,600 days of satisfied dentists. Our first A-Silicone has been a steady companion during the years. COLTENE would like to thank for the loyalty and take the opportunity to introduce an additional and revised line of our well-known brand:



PRESIDENT

The Original

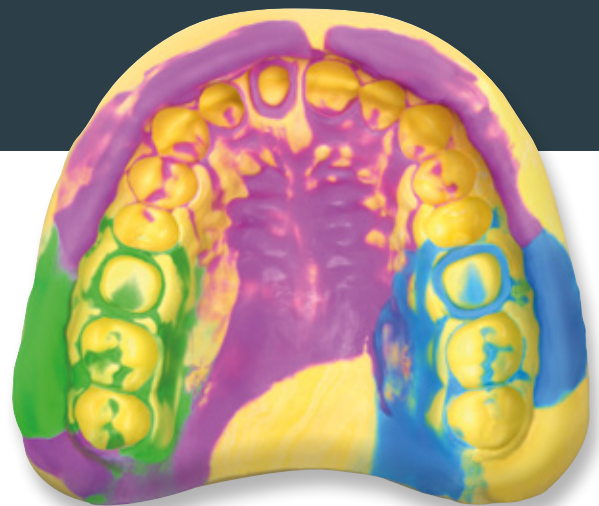
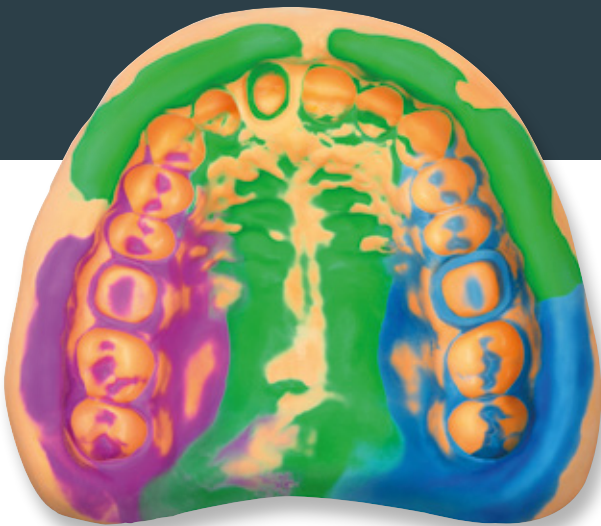
PRESIDENT

The Original

WHAT'S NEW?

NEW COLORS

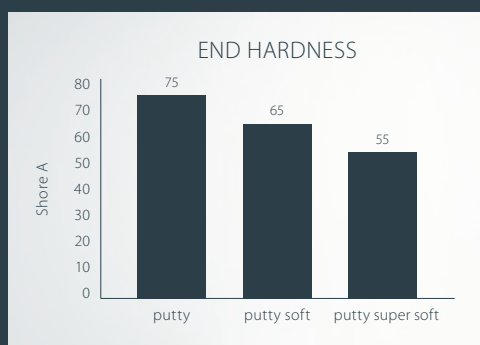
The new, fresh colors of the PRESIDENT line provide a better contrast between wash and tray material and thus show a more accurate detail readability.



NEW TRAY MATERIALS

The tray material portfolio of new PRESIDENT contains beside heavy body, putty and putty soft two additional viscosities: **MonoBody** and **putty super soft**.

With the line extension of the monophase material MonoBody, implant impressions can be done even more precisely. In addition, the new putty super soft is very smooth and easy to mix.



No matter which material you prefer, you will always make the right choice. PRESIDENT heavy body is highly viscous which perfectly fits to new Xtra light body. Putty is the preferred material for the 2-step technique where pressure is needed. For difficult oral situations putty super soft is recommended. Different end hardnesses offer optimal stability and simple ease of cutting.

NEW WASH MATERIALS

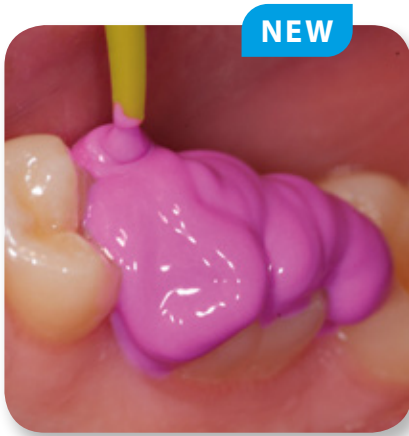
The new wash material portfolio of PRESIDENT offers beside light body and regular body one additional viscosity: **Xtra light body**

As indicated by the name, Xtra light body is a very fluid wash material which can be used to capture even marginal details as it flows into the narrowest areas without dripping from the tooth.



PRESIDENT

The Original



Xtra light body

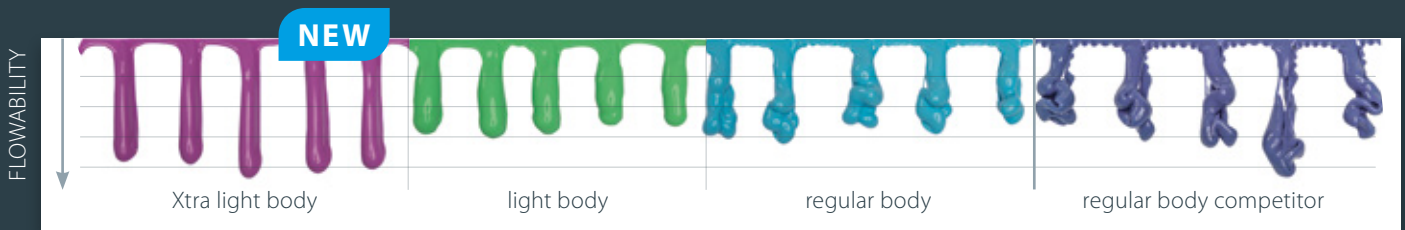


light body



regular body

PRESIDENT wash materials show even leveling and thixotropy which results in accurate contours.



Xtra light body

light body

regular body

regular body competitor

	Flowability	Viscosity	End hardness	Tear strength	Elastic recovery
WASH	Xtra light body		50 Shore A	1.9 MPa	99.8 %
	light body		50 Shore A	1.9 MPa	99.8 %
	regular body		55 Shore A	2.5 MPa	99.8 %
	MonoBody		58 Shore A	3.0 MPa	99.7 %
	heavy body		63 Shore A	3.5 MPa	99.7 %
TRAY	putty super soft		55 Shore A	2.5 MPa	99.5 %
	putty soft		65 Shore A	2.8 MPa	99.4 %
	putty		75 Shore A	3.5 MPa	99.2 %

THE PRESIDENT PORTFOLIO AT A GLANCE

ORDER INFORMATION



microSystem 25 ml

- 60019932** PRESIDENT The Original **Xtra light body**
4 x 25 ml cartridge
12 x Universal Mixing Tips
- 60019933** PRESIDENT The Original **light body**
4 x 25 ml cartridge
12 x Universal Mixing Tips
- 60019934** PRESIDENT The Original **light body**
20 x 25 ml cartridge
- 60019935** PRESIDENT The Original **regular body**
4 x 25 ml cartridge
12 x Universal Mixing Tips
- 60019936** PRESIDENT The Original **regular body**
20 x 25 ml cartridge

50 ml

- 60019937** PRESIDENT The Original **Xtra light body**
2 x 50 ml cartridge
12 x Universal Mixing Tips
- 60019938** PRESIDENT The Original **light body**
2 x 50 ml cartridge
12 x Universal Mixing Tips
- 60019939** PRESIDENT The Original **regular body**
2 x 50 ml cartridge
12 x Universal Mixing Tips
- 60019940** PRESIDENT The Original **heavy body**
2 x 50 ml cartridge
6 x Mixing Tip Turquoise

75 ml

- 60019941** PRESIDENT The Original **heavy body**
2 x 75 ml cartridge
8 x Mixing Tips Turquoise

putty

- 60019942** PRESIDENT The Original **putty**
2 x 300 ml
2 x spoons
- 60019943** PRESIDENT The Original **putty soft**
2 x 300 ml
2 x spoons
- 60019944** PRESIDENT The Original **putty super soft**
2 x 300 ml
2 x spoons

System 360

- 60019945** PRESIDENT The Original **MonoBody Starter Kit**
1 x 380 ml cartridge
10 x Dynamic Mixing Tips
1 x Fixation Ring
- 60019946** PRESIDENT The Original **MonoBody Refill**
2 x 380 ml cartridge
- 60019947** PRESIDENT The Original **heavy body Starter Kit**
1 x 380 ml cartridge
10 x Dynamic Mixing Tips
1 x Fixation Ring
- 60019948** PRESIDENT The Original **heavy body Refill**
2 x 380 ml cartridge

Tubes

- 60019949** PRESIDENT The Original **light body**
1 x 53 ml Base
1 x 53 ml Catalyst
- 60019950** PRESIDENT The Original **regular body**
1 x 53 ml Base
1 x 53 ml Catalyst

PRESIDENT

The Original

ACCESSORIES



PRESIDENT impression trays

Trays, transparent (12 pcs)

C6901	# 1 Large Upper
C6902	# 2 Large Lower
C6903	# 3 Medium Upper
C6904	# 4 Medium Lower
C6905	# 5 Small Upper
C6906	# 6 Small Lower
C6907	# 7 Quadrant UL/LR
C6908	# 8 Quadrant UR/LL
C6909	# 9 Anterior

Trays, blue – autoclavable (12 pcs)

C6950	# 1 Large Upper
C6951	# 2 Large Lower
C6952	# 3 Medium Upper
C6953	# 4 Medium Lower
C6954	# 5 Small Upper
C6955	# 6 Small Lower
C6956	# 7 Quadrant UL/LR
C6957	# 8 Quadrant UR/LL
C6958	# 9 Anterior

microSystem 25 ml

6270	microSystem Dispenser
60019663	Universal Mixing Tip (40 pcs)
6210	Oral Tips White (100 pcs)
6555	Oral Tips Yellow (100 pcs)
6223	Spreader Tips (100 pcs)

50 ml

6900	Dispenser 50/75 ml
60019663	Universal Mixing Tip (40 pcs)
6555	Oral Tips Yellow (100 pcs)
6223	Spreader Tips (100 pcs)



75 ml

6900	Dispenser 50/75 ml
6958	Plunger 75 ml (for Dispenser 50 ml)
6552	Mixing Tip Turquoise (40 pcs)

System 360

6162	Dynamic Mixing Tip Yellow (40 pcs)
6163	Fixation Ring

Miscellaneous

4422	Coltopress (tube squeezing aid)
4420	Cutting Knife
4410	Adhesive (10 ml)
4405	Adhesive autoclavable (10 ml)
4426	Impression Syringes incl. 15 tips (3 pcs)
4428	Refill tips (50 pcs)
4412	Mixing Pad (1 pcs)
4414	Mixing Pads (10 pcs)
4415	Spatula

PRESIDENT
CLASSIC SINCE 1975

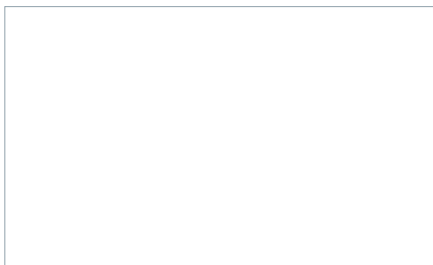


PRESIDENT
The Original

IT'S UP TO YOU!



© 2016 Coltène/Whaledent AG - www.coltene.com



Coltène/Whaledent Ltd.

The President Suite
Kendal House, Victoria Way
Burgess Hill, West Sussex
RH15 9NF/UK
T +44 1444 235486
F +44 1444 870640
info.uk@coltene.com

Coltène/Whaledent AG

Feldwiesenstrasse 20
9450 Altstätten/Switzerland
T +41 71 757 53 00
F +41 71 757 53 01
info.ch@coltene.com

Coltène/Whaledent Inc.

235 Ascot Parkway
Cuyahoga Falls
Ohio 44223/USA
T +1 330 916 8800
F +1 330 916 7077
info.us@coltene.com

