

# DryZ<sup>®</sup> blu

Hemostatic Gingival Retraction Paste

Create a **Dry** Working Environment Every Time

The alternative to retraction cord that respects the epithelium, without discomfort to the patient or trauma to the tissue.



 MADE IN USA

**parkell<sup>®</sup>**

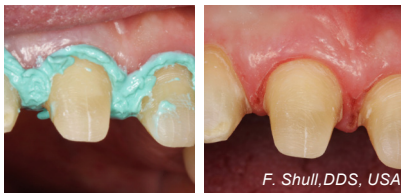
# Dryz<sup>®</sup> blu



## Features

- ✓ Optimized for tissue management when taking impressions, restoring teeth with subgingival decay, seating restorations, placing rubber dam clamps and bleaching teeth.
- ✓ Aluminium chloride (23%) acts fast and won't slough tissues.
- ✓ Quickly stops gingival bleeding and crevicular fluid seepage. The bright blue color makes it easy to see the material.
- ✓ The creamy consistency adapts well and easily washes off clean, leaving no residue behind.
- ✓ Set Time: 2 Minutes.
- ✓ Available in syringes and single dose capsules.

Because maintaining a dry field is critical to restorative success, Dryz<sup>®</sup> Blu can also be used to control hemorrhage and crevicular fluids prior to crown cementations (both temporary and permanent) or the placement of Class II and Class V restorations when the margins extend subgingivally.



## Take Control of the Sulcus for Picture Perfect Digital Impressions.

When your prep is flawless, you want your digital scanner to easily capture every detail. Parkell's Dryz<sup>®</sup> Blu soft-tissue management paste helps you do that. This easy-to-use material fits comfortably into the workflow of every digital dentist, providing that extra push for clearing the field of unwanted obstacles, so you can quickly obtain an accurate and complete digital impression every time.

Dryz<sup>®</sup> Blu is compatible with the most popular retraction techniques including compression caps, retraction cord, electrosurgery and lasers.

“

*Dryz Blu is the retraction paste of choice in my dental clinic. After trying every retraction paste in the market, I can definitely say it's simply the best. Its creamy consistency makes it easy to dispense and, above all, considerably easier to wash away than all other available retraction pastes. ”*

– Milad George, DDS, MSC,  
Sweden



### **Parkell tips:** use Dryz® Blu with Compression Caps!

- ▶ The paste provides better displacement of tissue when the material is pressed subgingivally (with either a compression cap or cotton roll). This inhibits the flow of crevicular fluids which may interfere with accurate impressing and atraumatically reflects the gingival cuff away from margins to create a dry, open sulcus.

SKU	DESCRIPTION
S187	<b>Dryz Blu Unit Dose Capsules Kit</b> (30) unit dose capsules (0.24g/capsule)
S190	<b>Dryz Blu Syringes Kit</b> (7) 0.5 ml (0.85g) syringes, (15) applicator tips
S191	<b>Dryz Blu Syringes Value Pack</b> (25) 0.5 ml (0.85g) syringes, (55) applicator tips

#### Accessories & Refills

S181	<b>Dryz Syringe Luer Lock Applicator Tips</b> (40)
------	--

# What Clinicians are Saying about Dryz® Blu

---



“Dryz Blu always works! It is my last resort for bleeding and I can say that it “saved my life” many times. I use it for digital impression taking and whenever I need a dry working field for class II and class V composite fillings, for example when there is a subgingival margin of the preparation and when bleeding and crevicular fluid can compromise adhesion. I only use Dryz Blu without any cord because it is less invasive than cord for digital impression. I like its creamy but firm consistency. It’s easy to apply, stays in place and retracts the gingiva well. I find that it stops bleeding effectively and above all rinses off easily, more easily than other pastes I have been using.”

*Jure Poglajen, DDS, Slovenia*

**Scan the QR code to watch the video testimonial**



“I really like Dryz Blu. Its qualities include good visibility and an ideal viscosity, neither too fluid nor too thick compared to other retraction pastes. Its ideal wettability allows seamless application of the material at the level of the gingival sulcus, all around the neck of the tooth, without interruption. Dryz Blu is easy to remove with water without rinsing too long and leaves no residues. There is no need to use the water/air syringe to its maximum which often causes trauma to the sensitive gingival tissue and can result in new bleeding. It is rapidly effective in its hemostatic action and gingival eviction. It’s a very good product.”

*Laurence Berenholtz-Bury, DDS, France*



“I always know I can trust Parkell to create products that, to put it simply, just plain work. That said, I’m still amazed at your product Dryz®. We’ve used it for a few years and I’m always impressed at how it stops bleeding almost instantly. I usually use laser retraction but when there is bleeding, I will often use your paste first. When washed off, I rarely have to pick up the laser. The stuff is just plain amazing. I can’t count the number of times it has saved an appointment and made both my and the patient’s lives easier.”

*Dr. Steven H. Schwartz, DDS - USA*



I’ve been using Dryz Blu for five years now. What I like most about Dryz Blu is that it washes away very easily, and every time gives me a wonderful and clean environment for taking a digital impression or making a restoration.

*Dr. Sjobbe Besseling, DDS, Netherlands*

**Scan the QR code to watch the video testimonial**

