

# Blu-Mousse®

## A Legacy VPS Bite Registration for Decades

- ▶ Stays stacked on the occlusal surface during placement.
- ▶ Optimal consistency allows patient to naturally close with zero resistance while capturing every detail.
- ▶ Hardens to a plaster-like final set with a durometer of 90 to ensure precise articulations.
- ▶ Does not distort between the time the bite is taken and when the lab articulates the models.
- ▶ Resists breakage on removal from the mouth, during trimming of excess flash and when used to position models during articulation.

### Set Times

- ▶ 30 Seconds | 60 Seconds | 2 Minutes

### Additional Clinical Applications

- ▶ Scannable using latest technologies.
- ▶ A matrix for fabricating direct and indirect provisionals together with Mach Die Silicone by Parkell.

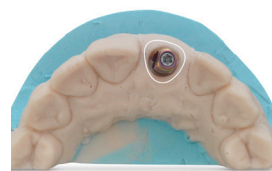
### Also Available

#### Green-Mousse® VPS Bite Registration Material

- ▶ Greater flexibility.
- ▶ 2-Minute set time.
- ▶ 60-Durometer.

**1987**

Introduced in 1987, Blu-Mousse has been an industry leader in VPS materials.



Courtesy of Dr. Ali Fakhry, Canada.

#### 50 ML SPLIT-CARTRIDGE KITS:

Include (2) 50 ml cartridges (100 ml ttl.) and mixing tips.

SKU	DESCRIPTION	SET TIME	SCENT
S457S	Blu-Mousse Super-Fast	30 Sec.	Unscented
S448S	Blu-Mousse Super-Fast	30 Sec.	Peppermint
S440S	Blu-Mousse 60	60 Sec.	Unscented
S438S	Blu-Mousse Classic	2 Min.	Unscented
S437S	Blu-Mousse Classic	2 Min.	Peppermint
S455S	Green-Mousse	2 Min.	Unscented

#### Accessories & Refills

S445	50 ml Split-Cartridge Mixing Tip Refill - Pink Base (30)
------	--



For more information, contact [infoeurope@parkell.com](mailto:infoeurope@parkell.com) or visit [parkell.com](http://parkell.com)

