

parkell today

BIOACTIVE EDITION



Predicta®

BIOACTIVE

bulk-fill

core build-up

desensitizer

*Stimulating
Remineralization
for Better
Patient Outcomes*



Predicta® desensitizer

BIOACTIVE

Fast and Effective Relief from Dentin Hypersensitivity

NEW! Predicta® Bioactive Desensitizer is changing the way clinicians treat dentin hypersensitivity by using the elements that are naturally found in the tooth, (calcium and phosphate) and restoring them to the tooth in the form of hydroxyapatite plugs that immediately start forming in the dentinal tubules upon application. Then, over the next several weeks, even after the patient has left the office, these plugs continue to penetrate further down the tubules to create an expanded zone of protection.

Predicta Bioactive Desensitizer doesn't stop there. An additional layer of mineralization also forms atop the dentinal tubules as a result of the ongoing release of calcium and phosphate ions. This extra layer broadens the seal that protects the

pain-sensing A-delta nerve fibers in the pulp from being stimulated.

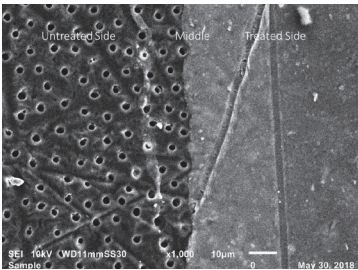
Treats Dentin Hypersensitivity Due to:

- ▶ Exposed roots after perio-surgery
- ▶ Bleaching procedures
- ▶ Scaling or root planing
- ▶ gingival recession

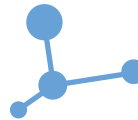
Easy-to-Use, Easy-to-Apply!

This syringe dispensed gel requires no mixing. Simply remove any calculus or plaque from the treatment site, blot the area dry with a cotton roll or gauze and you are good-to-go.

Predicta Bioactive Desensitizer is considered highly biocompatible as it is free from methacrylates and soft-tissue irritating chemicals.



Comparison of untreated dentinal tubules (left), with tubules that have been covered with a dense layer of Predicta® Bioactive Desensitizer (right). Images courtesy of University of Washington School of Dentistry.



ITEM # PRODUCT

S626	Single Syringe Kit (1) 3 ml syringe, (10) applicator tips, (15) applicator brushes, (1) mixing well	Predicta® Bioactive Desensitizer Kits
S625	Three Syringe Kit (3) 3 ml syringes, (30) applicator tips, (50) applicator brushes, (1) mixing well	

Accessories & Refills

S390	Dispensing Tip (Pre-Bent/Yellow) Refill (30 pcs)
S391	Fine (1.5mm) Micro Brush Applicator Refill (100 pcs)

Dual-Cure Composite for Core Build-Ups and Post Cementations

Optimized for placement in teeth that require core build-ups, with or without posts, prior to the prepping, impressing, fabrication, and cementation of a crown.

Predicta® Bioactive Core is bioactive and releases calcium and phosphate ions and releases and recharges fluoride ions to stimulate mineral apatite formation and remineralization at the material-tooth interface

- ▶ Dual-cure for unlimited depth of cure
- ▶ Zirconia added to improve the prepping experience
- ▶ Indicated for core build-ups and as a post cement
- ▶ Strong and stable support for crowns made of zirconia, porcelain,
- ▶ PFM and metal
- ▶ Multiple viscosities

Bioactivity is known in the field to equate to stronger bonds between the restoration and tooth, penetration and filling of micro-gaps, reduction in sensitivity, guard against secondary caries, and the sealing of margins against microleakage.



ITEM # PRODUCT

ITEM #	PRODUCT	
S600	Flowable - White Shade	Predicta® Bioactive Core Build-Up Kits Include (1) 5 ml hand-held syringe, (10) 17-gauge mixing tips and (10) 19-gauge mixing tips
S601	Flowable - Tooth Shade	
S605	Stackable - White Shade	
S606	Stackable - Tooth Shade	

Accessories & Refills

S620	5 ml Dispensing Gun
S621	17-Gauge Dispensing Tip Refill (30 pcs)
S622	19-Gauge Dispensing Tip Refill (30 pcs)

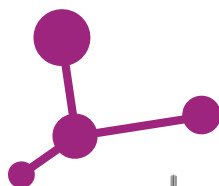


Universal, Dual-Cure Composite

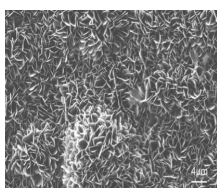
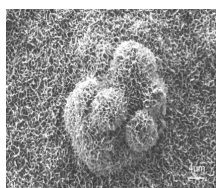
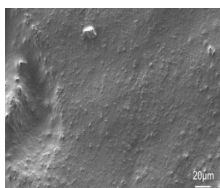
A dual-cure composite that can be used to fill any size cavity preparation, all the way up to the occlusal surface, without any need for additional layering. From large Class V's to four surface posterior restorations, there are no limits to what you can do with Predicta® Bioactive Bulk.

Predicta® Bioactive Bulk is bioactive and releases calcium and phosphate ions and releases and recharges fluoride ions to stimulate mineral apatite formation and remineralization at the material-tooth interface

- ▶ Dual-cure for unlimited depth of cure
- ▶ Fluorescence for a more natural appearance
- ▶ Multiple viscosities and shades
- ▶ Highly radiopaque
- ▶ Indicated for Class I, II, III, IV, and V restorations
- ▶ Strong and durable to withstand occlusal forces
- ▶ Highly polishable
- ▶ Nanohybrid versatility



Mineral Apatite Formation



SEM Analysis of Predicta™ Surface after 28 Days in Simulated Body Fluid (SBF).
 Left: Predicta Control, no SBF. Center: Predicta, 7 days in SBF. Right: Predicta, 28 days in SBF. Image courtesy of Uppsala University, Sweden.

ITEM # PRODUCT

S615	Bulk-Fill - A1/B1 Shade	Predicta® Bioactive Bulk-Fill Kits Include (1) 5 ml hand-held syringe and (20) 17-gauge mixing tips
S616	Bulk-Fill - A2/B2 Shade	
S610	Bulk-Fill (LV) - A1/B1 Shade	
S611	Bulk-Fill (LV) - A2/B2 Shade	

Accessories & Refills

S620	5 ml Dispensing Gun
S621	17-Gauge Dispensing Tip Refill (30 pcs)
S622	19-Gauge Dispensing Tip Refill (30 pcs)



What Clinicians are Saying about Predicta® Bioactive



In a recent episode of *Inside Dentistry's* Product Talk, **Dr. Olitsky, DMD** shares his experience using Predicta® Bioactive Bulk and talks about the ease of use, aesthetics and benefits of bioactivity.



Scan code to watch the video



Hear **Sherri Lukes RDH, MS, FAADH** discuss the multiple benefits of using Predicta® Bioactive Desensitizer for both patient and clinician.



Scan code to watch the video



Take a look at this *Dental Product Shopper* article, that features **Dr. Cavanaugh, DMD**, an early adopter of Predicta® Bioactive Core who, after a year of using it, has had “nothing but success” with the product.



Scan code to view the article



“Predicta Desensitiser impressed us from the very first use. The features that excited us were the compatibility with adhesive systems adhesive systems, the gel formulation for easy application, and the colour which allows it to be clearly visible on the surfaces to be treated for precise application.”

Prof. Loris Prosper, DDS and Dr. Tiziano Galizzi, DDS - Italy

To learn more, visit Parkell.com or contact your local authorized Parkell distributor



"I have been using Predicta composites since 3 years. They give predictable results and I like the idea of using materials that not only restore but also actively promote tooth health in the long run. I also like that they are dual cure, so depth of cure is unlimited. No matter how deep the preparation we can be sure that the material will set.

Jure Poglajen, DDS, Slovenia

Scan code to attend the webinar



"Our dental practice is growing more and more delighted with Predicta Bulk. I think Parkell came up with an excellent product. We like that it is chemically cured, you know it hardens all the way even if you use a thick layer. Other bulk materials have a limited depth of cure. The colour match is surprisingly good, I didn't expect that."

Dr. Manouchehr Kiaei, DDS - Sweden

Scan codes for a full product evaluation and clinical tips



"Our objective is always simplifying the procedure and limit the use of materials. Predicta Core meets such needs and those of our patients, who want high quality but fast restorations."

Dr. Giuseppe Chiodera, Styleitaliano Honorary Member

Scan codes for a full product evaluation and clinical tips



"Predicta Desensitizer is very effective, it works very well immediately blocking the sensitivity for several days and with a second application it dramatically reduces sensitivity in the long term."

Dr. Consuelo Sanavia, Dental Hygienist - Italy



The ease with which I can treat my patients' sensitive teeth by using Predicta desensitiser has positively surprised me. The gel is incredibly easy to use and very gentle on the patient. It gives immediate relief from hypersensitivity that lasts for a long time. The dental hygienists in our practice also enjoy using it on their patients."

Dr. Sjobbe Besseling, DDS, Netherlands

Scan code for a full product evaluation



For information and orders within Europe contact infoeurope@parkell.com,  +46 708 593 481