



Making Your Life Better.

BU Medical Equipment
Sede Legale ed Amministrativa / Headquarters
CEFLA s.c.
Via Selice Provinciale, 23/a
40026 Imola (BO) - Italy
t. +39 0542 653111
f. +39 0542 653344
sternweber@sternweber.com
sternweber.com

Stabilimento / Plant
Via Bicocca, 14/C
40026 Imola (BO) - Italy
t. +39 0542 653441
f. +39 0542 653601



03/2021

SSCCGB211500

According to the standards in force, in extra-EU areas the availability and specifications of some products and/or characteristics may vary. Please contact your local distributor for further information. Due to our policy of constant technological upgrading, technical specifications may be subject to change without prior notice.

MAXIMUM PERFORMANCE,
MINIMUM SIZE

STERNWEBER.COM



SURGICAL S CART





**YOUR
TALENT
INSPIRES
US**

SPECIALIST PERFORMANCE

To give dentists the freedom to express their hard-earned specialist talents, the Surgical Cart incorporates advanced instruments, a touch screen panel with latest-generation electronics and dedicated systems/software for implantology and endodontics.

SAFE MOBILITY

Available with a standard or quick coupling for the floor-mounted connections box, the Surgical Cart can be used in more than one room of the surgery. Simple and safe, the coupling-decoupling mechanism provides dentists with greater organizational flexibility.

TAILOR-MADE CONFIGURATION

The Surgical Cart can be configured for traditional endodontics or reciprocating-mode instruments. For implant procedures, instead, a peristaltic pump and torque curves are available, as are specific references for implant procedures.





The Surgical Cart offers an advanced solution that also provides mobility in surgeries with multiple rooms

In addition to providing everything needed to practice endodontics and implantology, the Cart can be provided with a quick connector for the power supply box. With one box in each room, surgeries can use just one Cart, moving it from room to room as needed. This reduces both the initial investment and maintenance costs. Note also that the non-transferable Cart lets dentists make optimal use of stand-alone patient chairs; alternatively, it can be used just for orthodontic practices.



Safe holders
Instruments are ergonomically arranged with the syringe in an upright position. The holders are designed to contain the instrument even if it is put back incorrectly. A T-LED curing light can be added as an optional sixth instrument.



Quick coupling
The hard-wearing connector is designed to provide immediate mobility and a secure connection to the power supply box, without any work on the part of a technician.



Fixed connection
The version with the standard box connector provides plenty of operating space and the potential to perform advanced endodontic and surgical treatment, letting dentists get the most from a stand-alone patient chair.



Smartphone-like friendliness
Clear, intuitive graphics to help speed up treatment times. Smartphone-like operation makes for an extremely simple, up-to-the-minute user experience.



Ergonomic and with a large display, the Cart is always ready-to-go whatever the treatment requirements

Featuring an instrument module that can be raised or lowered with ease, the Surgical Cart with quick coupling can be moved from room to room. A convenient handle makes positioning easy and the 7" HD touch screen

provides crystal-clear information. Managing the instruments, clinical programmes and hygiene systems couldn't be simpler.



Data export

Exported via USB key as a PDF document, torque curves can be saved in the patient's medical record. In .csv format the data acts as a valuable source for clinical analysis and assessment, and as a .png image the curves can quickly be consulted on the Cart's multimedia display.

USB connection

All dentists can set their own parameters and save them directly on the control panel or, on the Multimedia version, on a USB storage device. Via the USB port, dentists can download torque curves (function available in surgical mode).

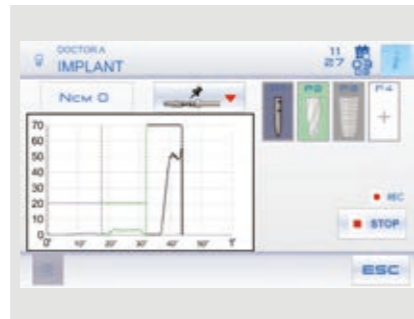


State-of-the-art foot control

The wireless foot control offers the convenience of being able to move the equipment easily. It also makes cleaning tasks easier and minimises interaction with the console as the joystick can control numerous micromotor and peristaltic pump functions.

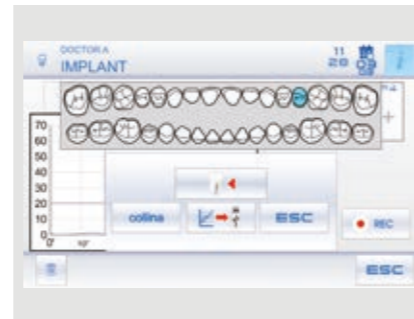
The convenience of an implantology workstation with dedicated software, an interactive display, and the freedom to practise wherever there's a plug & play box

Precise, powerful and user-friendly, the integrated implantology system provides - in concert with the Full Touch Multimedia display - a valid alternative to a stand-alone surgical micromotor. The software controls both micromotor and peristaltic pump, provides the dentist with visual references for implant procedures and documents the treatment to provide clinical support and exportable documentation.



Torque curves

Cart users can record the torque curves during treatment. In addition to monitoring the torque delivered by the micromotor, full-curve info provides valuable clinical support for any subsequent treatment on adjacent or



contralateral teeth. To complete the data set, implant tightening torque is also recorded.



EVO R20L contra angle

The EVO R20L contra angle, which has a 20:1 gear ratio specifically for surgery, can be autoclaved and heat-disinfected. It features an internal cooling system and external spray, plus LED lighting with an integrated generator.



Peristaltic pump

The peristaltic pump, controlled via the Full Touch control panel, is integrated into the dentist's module, eliminating the need for any additional modules or carts around the patient chair.



i-XS4 micromotor

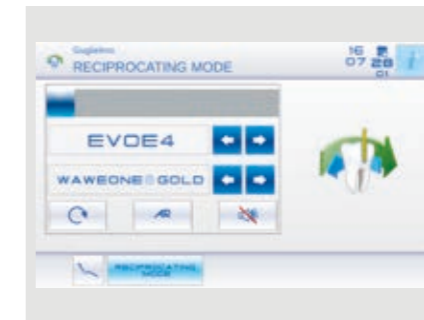
The i-XS4 is suitable for implant surgery. The software allows precise, safe control of speed and torque (which, with the EVO R20L surgical contra angle with 20:1 ratio, can reach 70 Ncm).





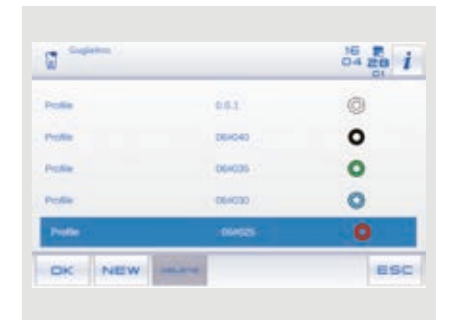
Endodontics at your fingertips, anywhere

From brushless micromotor to integrated software, the Cart has everything dentists need to practice endodontics, also with instruments in reciprocating mode. During endodontic treatment, the display provides key data on a dedicated user-friendly display, making workflows faster and more efficient.



Reciprocating mode

As an optional, the i-XS4 micromotor performs a reciprocating movement with alternating rotation to carry out treatment with the relative files. This mode is controlled by the pre-installed software.



ENDO database

A pre-loaded endocanal bur library is available to the dentist, who can perform treatment with either traditional or reciprocating instruments. The application that allows reciprocating movement is optional. The endodontic file brand names are not owned by Cefla or any of its subsidiaries.



i-XS4 micromotor

Extremely powerful, light and versatile, the i-XS4 is suited to conservative and prosthetic dentistry, endodontics and implantology. Combines reciprocating movement with alternating rotation, a mode controlled by pre-installed software. Fully autoclavable.



EVO E4 contra angle

Featuring a 4:1 ratio specific for endodontics, the EVO E4 contra angle can be autoclaved and heat-disinfected. The miniaturised head makes access to the treatment zone easier. Recommended for endodontic treatment in reciprocating mode and with use of the integrated apex locator.



Apex locator

With the dedicated contra angle, the apex locator allows the apex distance to be displayed during the root canal instrumentation phase. The nearing of the apex is also indicated by warning buzzers. To enhance safety, micromotor rotation is automatically disabled when it is reached.



Cleaning the display
The control panel can be disabled to sanitize the glass surface of the display, thus preventing unwanted activation of controls. Moreover, disposable covers are provided.



SANASPRAY
Tank with distilled water as an alternative to mains water.



I.W.F.C.
This device performs automatic spray circuit flushing; perfect between one patient and the next or if the machine has been idle for a while.



Di.V.A. Digital Virtual Assistant

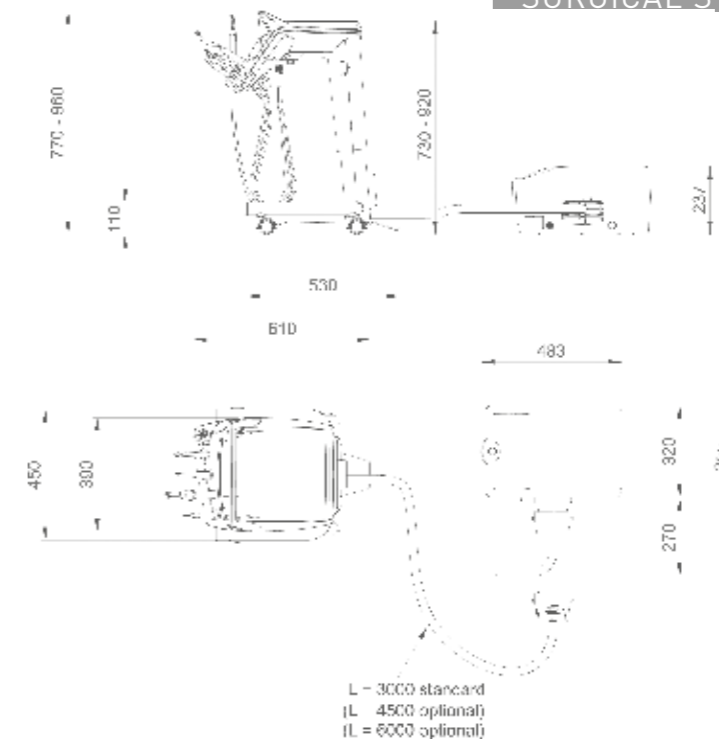
When linked to the Internet via Easy Check, the cart can rely on a real-time troubleshooting and technical support service. Moreover, the Di.V.A.*, the digital virtual assistant optimises workflows in technologically advanced dental surgeries and helps dentists monitor, via a dashboard, their usage of available instruments and analyse surgery efficiency. In larger facilities, it's an excellent tool for managing workloads and planning maintenance.

*Digital Virtual Assistant

SURGICAL S CART	
HYGIENE SYSTEMS	
SANASPRAY	*
I.W.F.C.	*
DENTIST'S MODULE	
Clinic 7" Full Touch display	●
Multimedia 7" Full Touch display	*
i-XS4 Micromotor with fibre optics (100 - 40,000 rpm, 5.3 Ncm)	●
Scaler (with or without f.o.)	*
Peristaltic pump kit	*
"Torque curves" implantology function	*
6-way syringe	●
Sixth instrument	*
Reciprocating mode module	*
Integrated Apex Locator	*
Multi-function foot control	●
Pressure-operated foot control	*
Power Pedal foot control	*
Wireless multi-function foot control	*
Wireless pressure-operated foot control	*
Power Pedal foot control - wireless	*

● as standard * optional - not available

SURGICAL S CART



Measurements in drawings are in millimetres.